



Apartment 14 Smokehouse One

Duke Street, North Shields



Apartment 14 Smokehouse One, Duke Street, North Shields, NE29 6BU

A stylish two bedroom apartment, situated within the modern development of Smiths Dock, North Shields. Smiths Dock, which was developed by Urban Splash and Places for People in 2018/19, offers some of the finest, luxury, modern apartments within the region and are well placed to provide easy access to North Shields Fish Quay with its restaurant scene and also into Tynemouth with its cafes, restaurants, amenities and fantastic beaches.

Communal entrance hall with secure entry phone system | Lift and stairs to all floors | Entrance hallway with large store cupboard | Open-plan lounge/dining and kitchen with floor to ceiling sliding glass doors, integrated appliances and modern units to the kitchen | Private balcony with ample space for seating with glass balustrades and wonderful views | The central hallway then leads to two double bedrooms | Contemporary bathroom with three piece suite | Externally the property benefits from one allocated parking space.



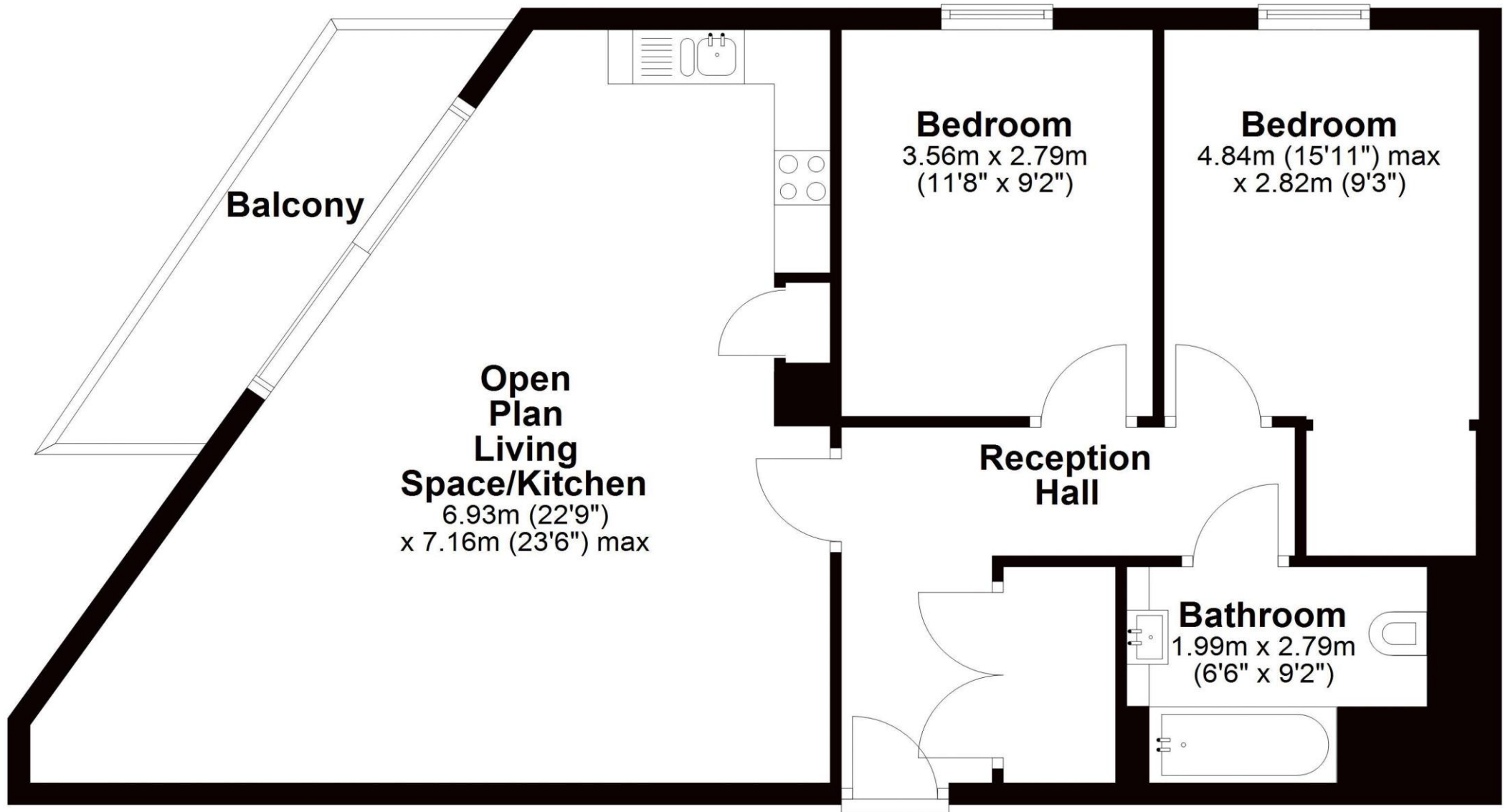


Services: Mains electric, water and drainage | Tenure: Leasehold | Lease Remaining: TBC | Ground Rent: TBC |
Service Charge: TBC | Council Tax: Band TBC | Energy Performance Certificate: Rating B

Price Guide: Guide Price £250,000

Third Floor

Approx. 75.5 sq. metres (812.8 sq. feet)



Total area: approx. 75.5 sq. metres (812.8 sq. feet)

Apartment 14, Smokehouse One, Smiths Dock, North Shields



SANDERSON YOUNG

Regional Gosforth Office
95 High Street | Gosforth
Newcastle upon Tyne | NE3 4AA
gosforth@sandersonyoung.co.uk
0191 213 0033